



10 LIVING LABS

Exploring data inclusivity for Connected European Transport

Sadix



BetterFlow



SIMC



2TransCity



OptiPort



DaLab



RFID-in-Rail



10 LIVING LABS

RRTC DM



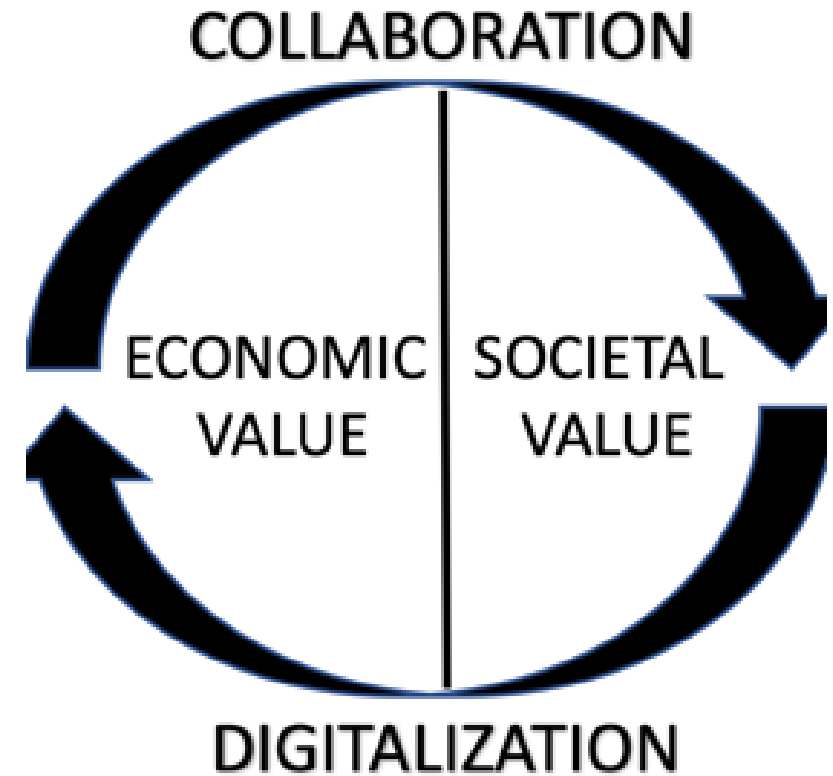
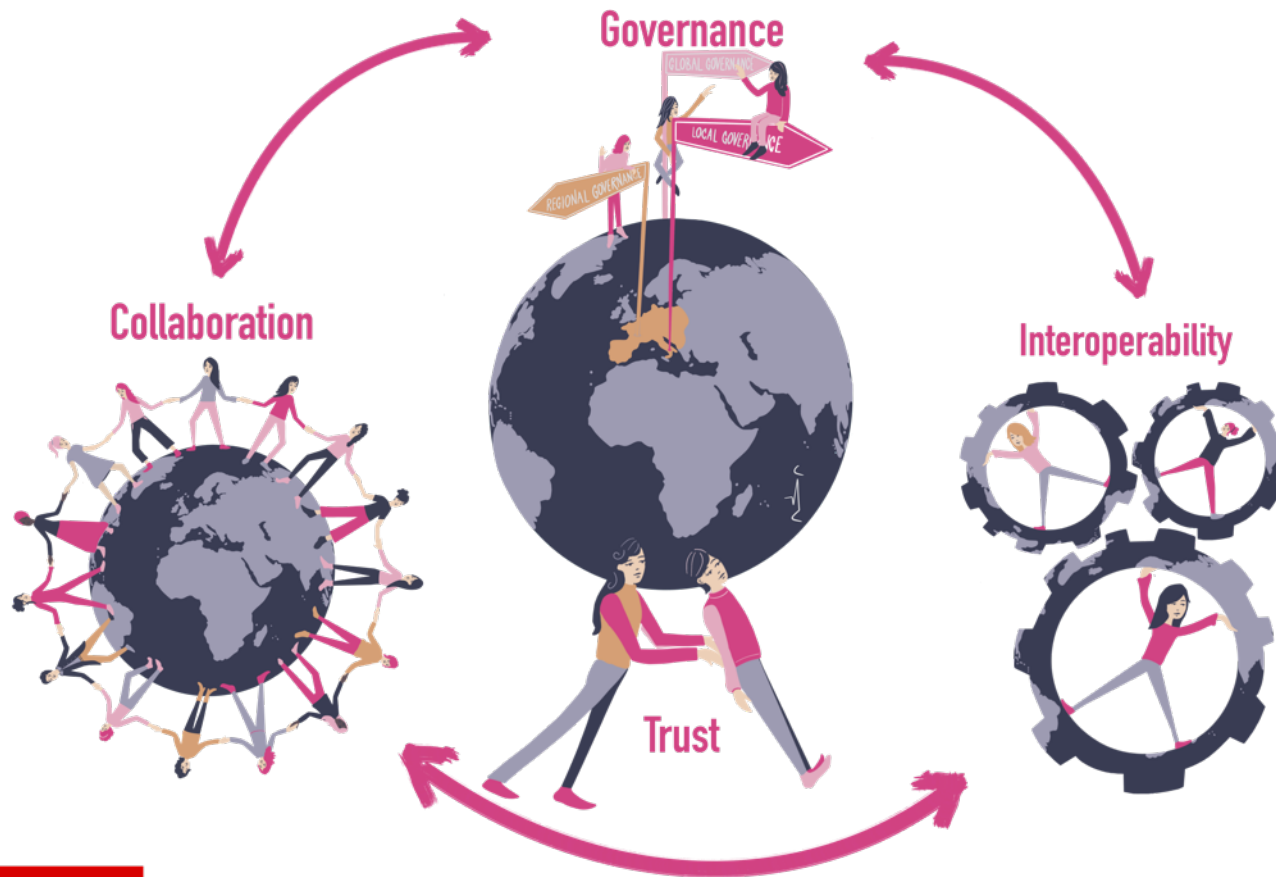
ELSA BEA.s.t



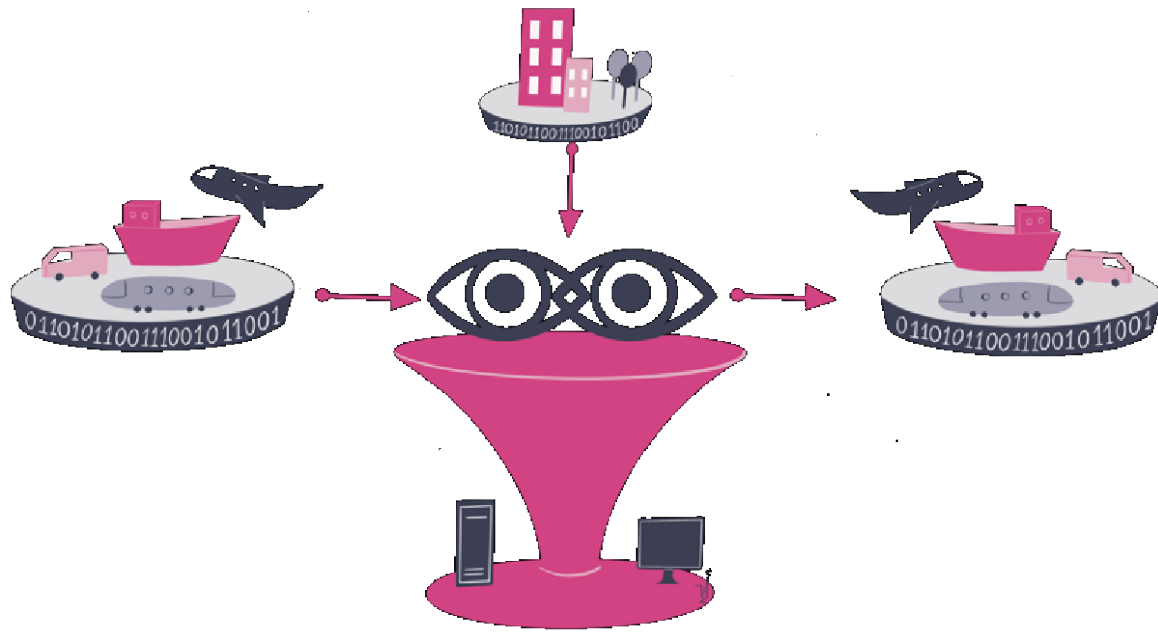
MMIS



COLLABORATION & DIGITALIZATION IN SYMBIOSIS

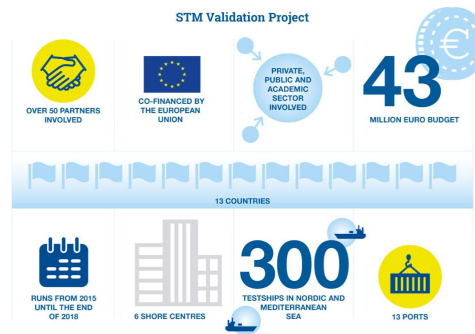


Deplide as an enabler for research



- Focus on data sharing in multimodal transport
- FEDeRATED compliant
- Exploration of uses cases in lab or real settings (pilots, hackathons, LivingLabs, etc)
- Flexible access to data sources
- Component library for user interfaces

Deplide lineage



PortCDM 2.0

StationCDM

YardCDM

TerminalCDM



2013

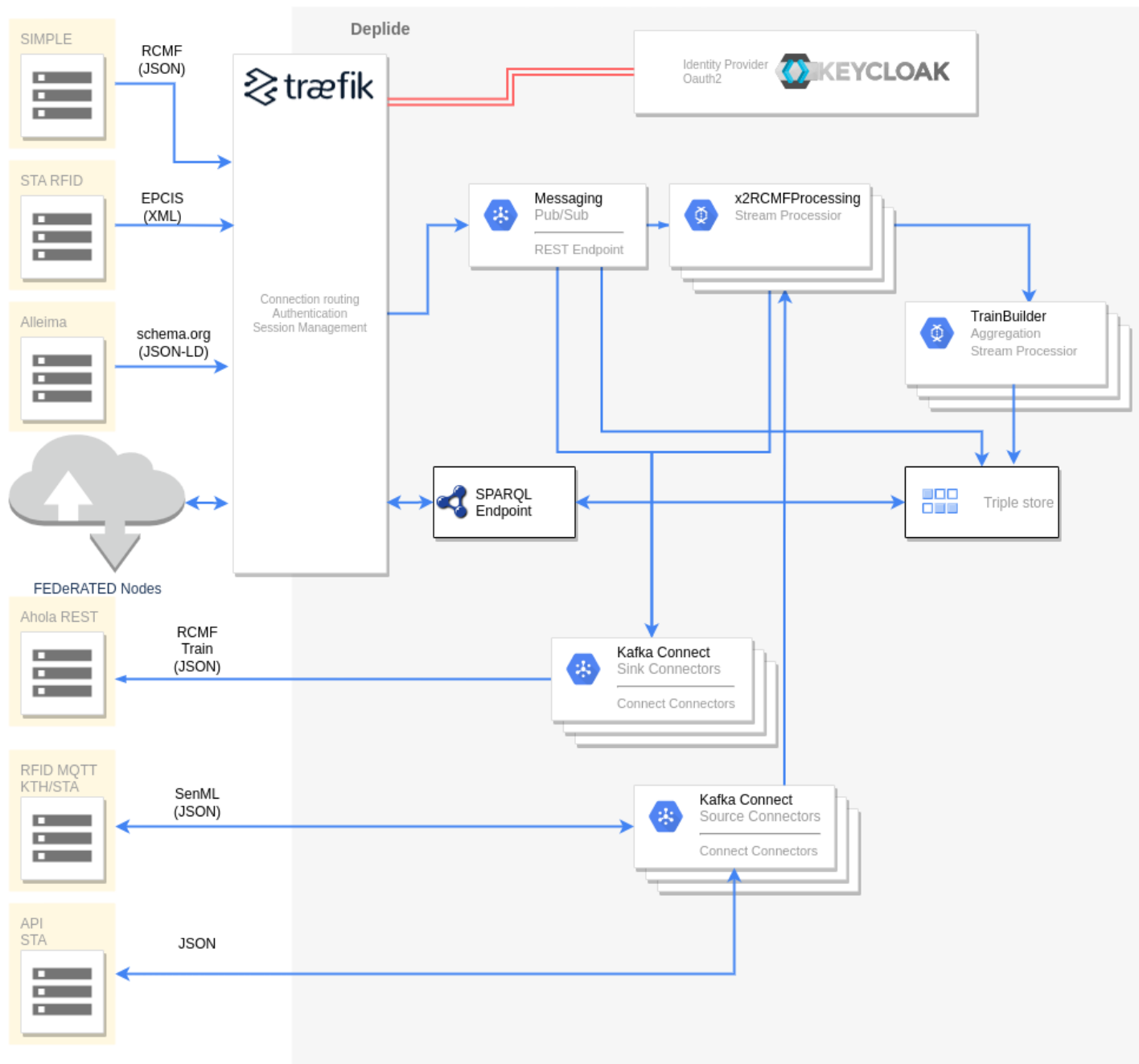
2015

NOW

?

PortCDM concept

S-211, a standard for port call messages accepted by IMO (2 million messages exchanged)



Deplide – Under the hood

Visit us in the Boardroom!

Contact: Jan.Bergstrand@trafikverket.se
Annica.Roos@trafikverket.se
Kenneth.Lind@ri.se
Mikael.Lind@ri.se
Eddie.Olsson@ri.se
Living Lab leaders